

cool, temperate climate



CERTIFIED COMPONENT

Passive House Institute

The challenge is... for new Technology... in the system!



ALU - Passive House Sliding-Door + Window



PURAL eco HST 230

cool, temperate climate



CERTIFIED COMPONENT

Passive House Institute

Passive House efficiency class

phE

phD

phC

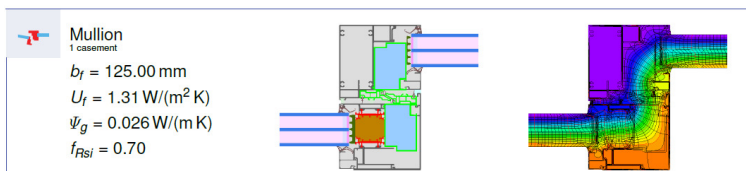
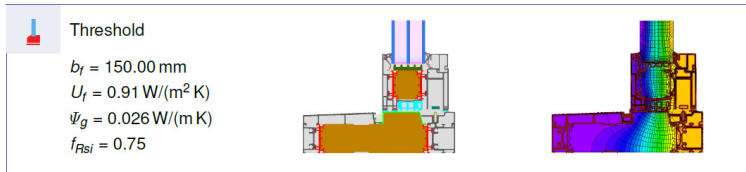
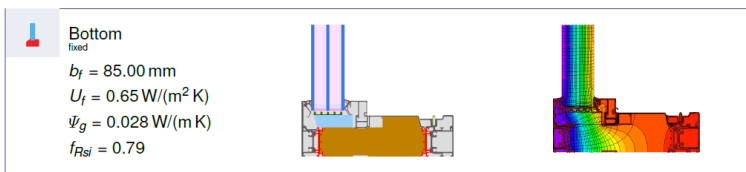
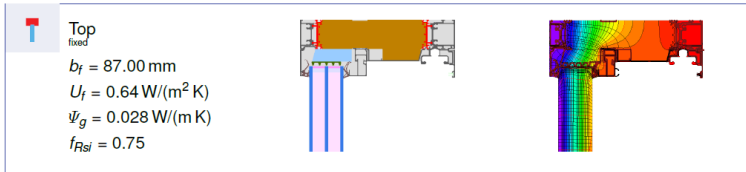
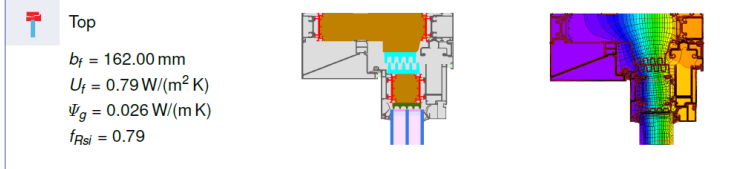
phB

phA

Frame values	Frame width b_f mm	U-value frame U_f W/(m ² K)	ψ -glass edge ψ_g W/(m K)	Temp. Factor $f_{Rsi=0.25}$ [-]
Top (to)	162	0.79	0.026	0.79
Side (s)	133	0.76	0.026	0.78
Top fixed (tof)	87	0.64	0.028	0.75
Side fixed (sf)	85	0.64	0.027	0.79
Bottom fixed (bof)	85	0.65	0.028	0.79
Threshold (th)	150	0.91	0.026	0.75
Mullion / casement (m)	125	1.31	0.026	0.70

Spacer: SWISSPACER Ultimate

Secondary seal: Polysulfide



ALUMINIUM

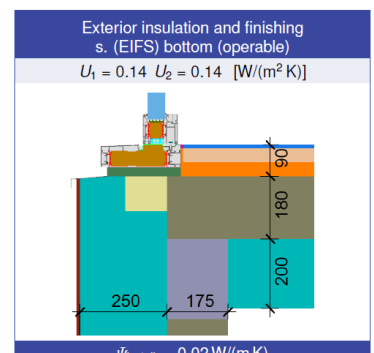
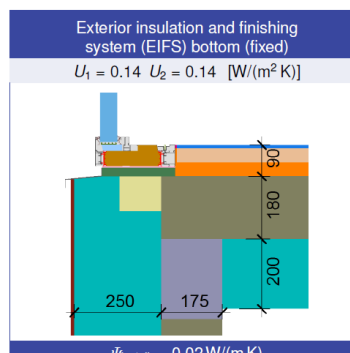
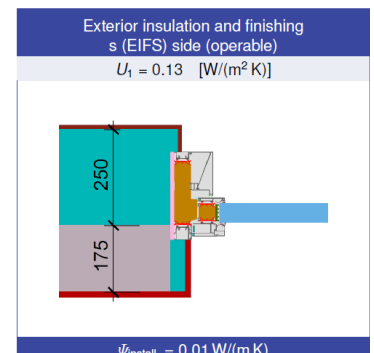
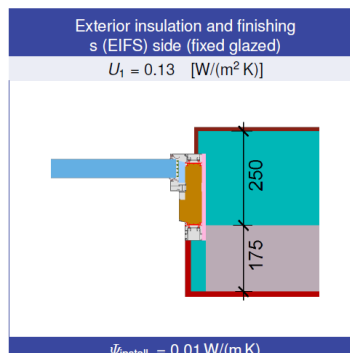
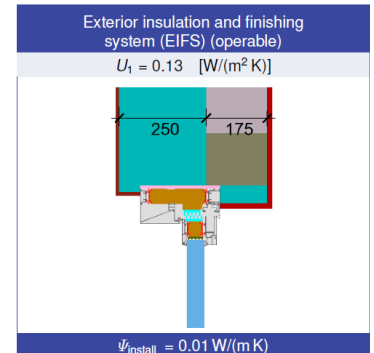
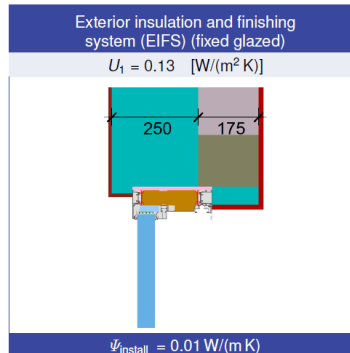
Passive House - Sliding element

PURAL eco HST 230

This certificate was awarded based on the following criteria for the cool, temperate climate zone

Comfort $U_{SL} = 0.80 \leq 0.80$ W/(m² K)
 $U_{SL,installed} \leq 0.85$ W/(m² K)
 with $U_g = 0.70$ W/(m² K)

Hygiene $f_{Rsi=0.25} \geq 0.70$



▶ The only Sliding Door/Window with polyurethan thermal insulation block

Glazing	$U_g =$	0.70	0.66	0.60	0.54	W/(m ² K)
Window	U_{SL}	0.80	0.76	0.72	0.67	W/(m ² K)

▶ Economical for processing

- ▶ Glass thickness up to 74 mm
- ▶ Manufactured without FCKW
- ▶ Standard SL-fittings
- ▶ Completely recyclable